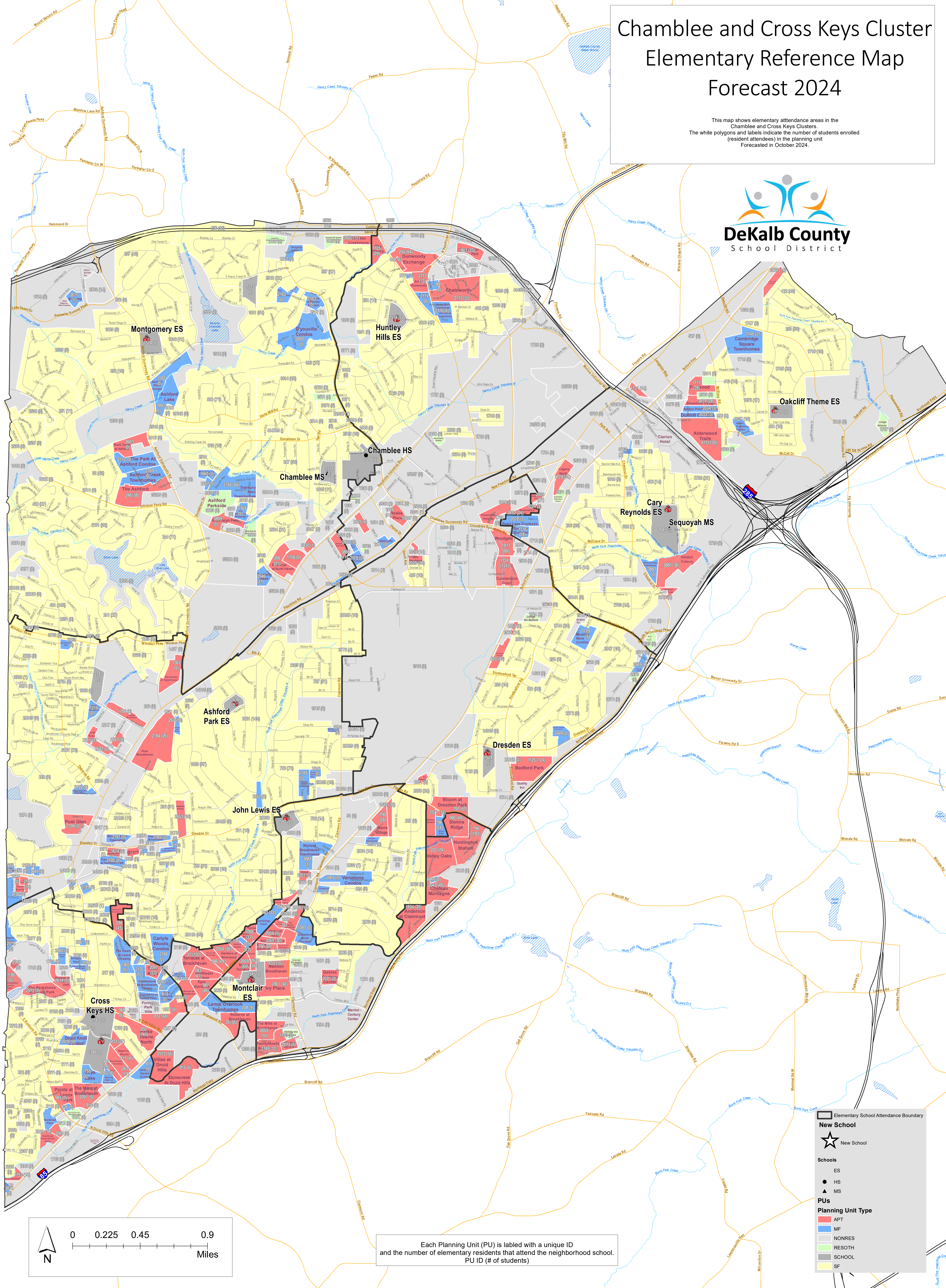
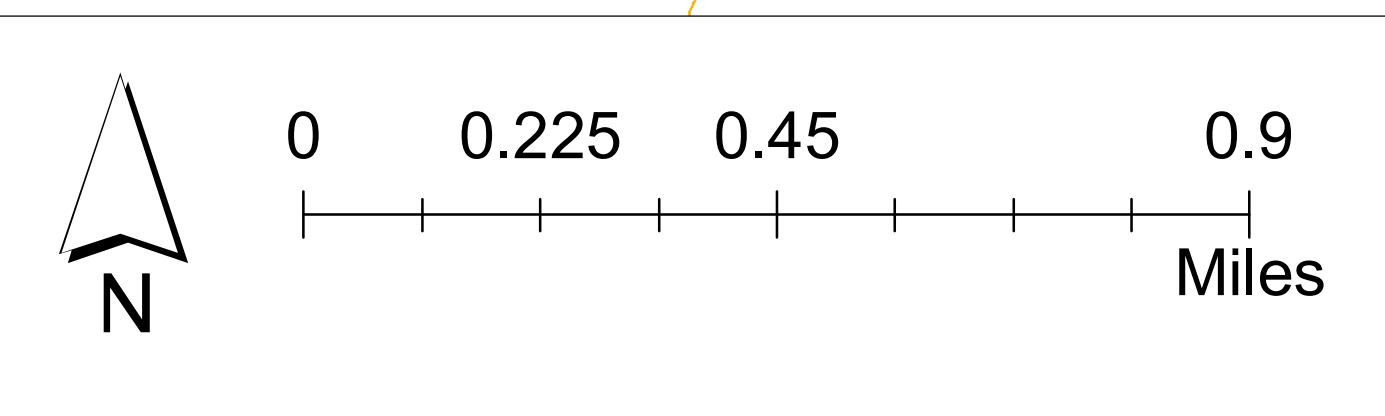


Chamblee and Cross Keys Cluster Elementary Reference Map Forecast 2024

This map shows elementary attendance areas in the Chamblee and Cross Keys Clusters. The white polygons and labels indicate the number of students enrolled (resident attendees) in the planning unit Forecasted in October 2024.



Each Planning Unit (PU) is labeled with a unique ID and the number of elementary residents that attend the neighborhood school. PU ID (# of students)



Elementary School Attendance Boundary

New School

- ★ New School

Schools

- ES
- ▲ MS

Planning Unit Type

- APT
- MF
- NONRES
- RESOCH
- SCHOOL
- SF